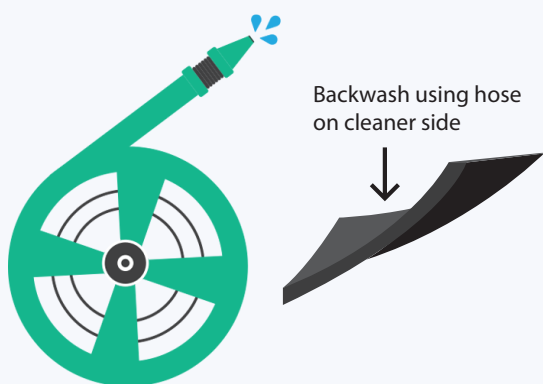
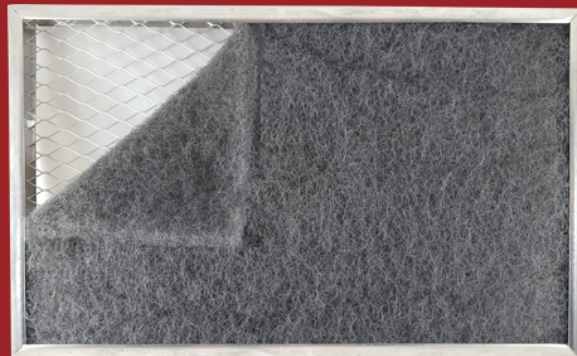




Cleaning Instructions



PermaFlo Gray filter mat that is an excellent choice over metal mesh and hogs hair because it is progressively structured, with the density of fiber layers that promotes cleaner air. The fibers are unaffected by moisture and safe to handle. Antimicrobial has been added to inhibit the growth of bacteria, fungi, mold spores, mildew and other contaminants that can be created in environments with constant humidity and moisture.

How to clean your PermaFlo filter:

When using water, start by backwashing the filter so that the dirt load on the opposite side can wash out better. Keep the dirty side facing down when placed in a sink, on the ground or grate. Once all dirt is washed out, wait for the filter to dry.

Do not use soap, only use water. Do not twist or fold the filter to drain. The media will not absorb moisture, which makes it easy to clean and dry quickly.

Another alternative is to use a shop-vacuum to clean both sides of the filter.

