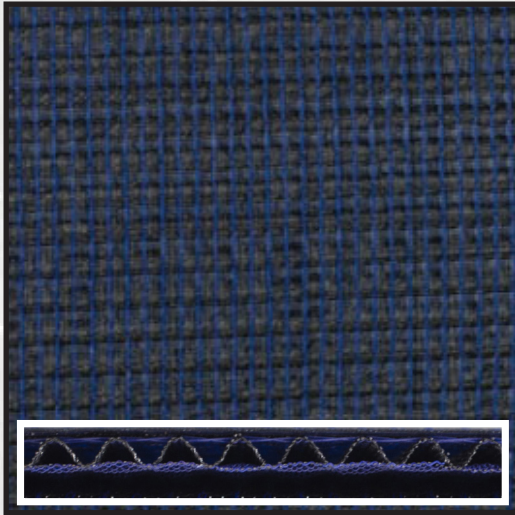


CORRUGATED

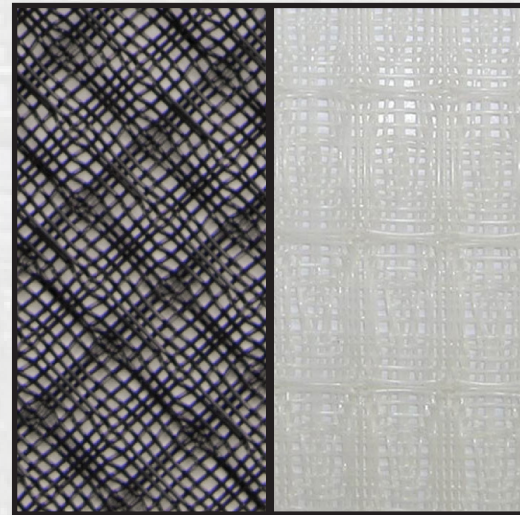


MODELS

PCOOLMEDIA

PAD-PCOOL

HONEYCOMB



MODELS

BHC12

WHC12

PAD-BHC12

PAD-WHC12

SPECIFICATIONS

TYPE OF WEAVE	CORRUGATED	HONEYCOMB
INITIAL RESISTANCE	0.04 IN W.G.	0.02 IN W.G.
AVE ARRESTANCE EFFICIENCY	63%	38%
MEDIA THICKNESS	0.25"	70 MIL
MEDIA WEIGHT	10.1 OZ/YD ²	5.0 OZ/YD ²
YARN DIAMETER	10 MIL	12 MIL
YARN COUNT (warp/fill)	65/74	30/32
COLOR	BLACK	BLACK/WHITE
ROLL SIZE	76" X 30" LY	62 X 300 LY
ROLL WEIGHT		APPLY 170 LBS
AIR PERM. (CFM)	1230	1230
DUST HOLDING CAPACITY	100 GRAMS	55 GRAMS